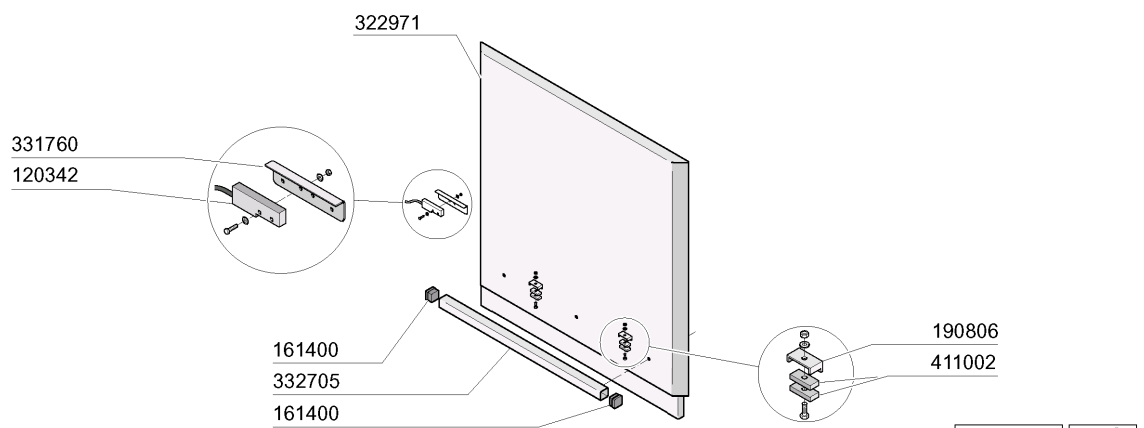
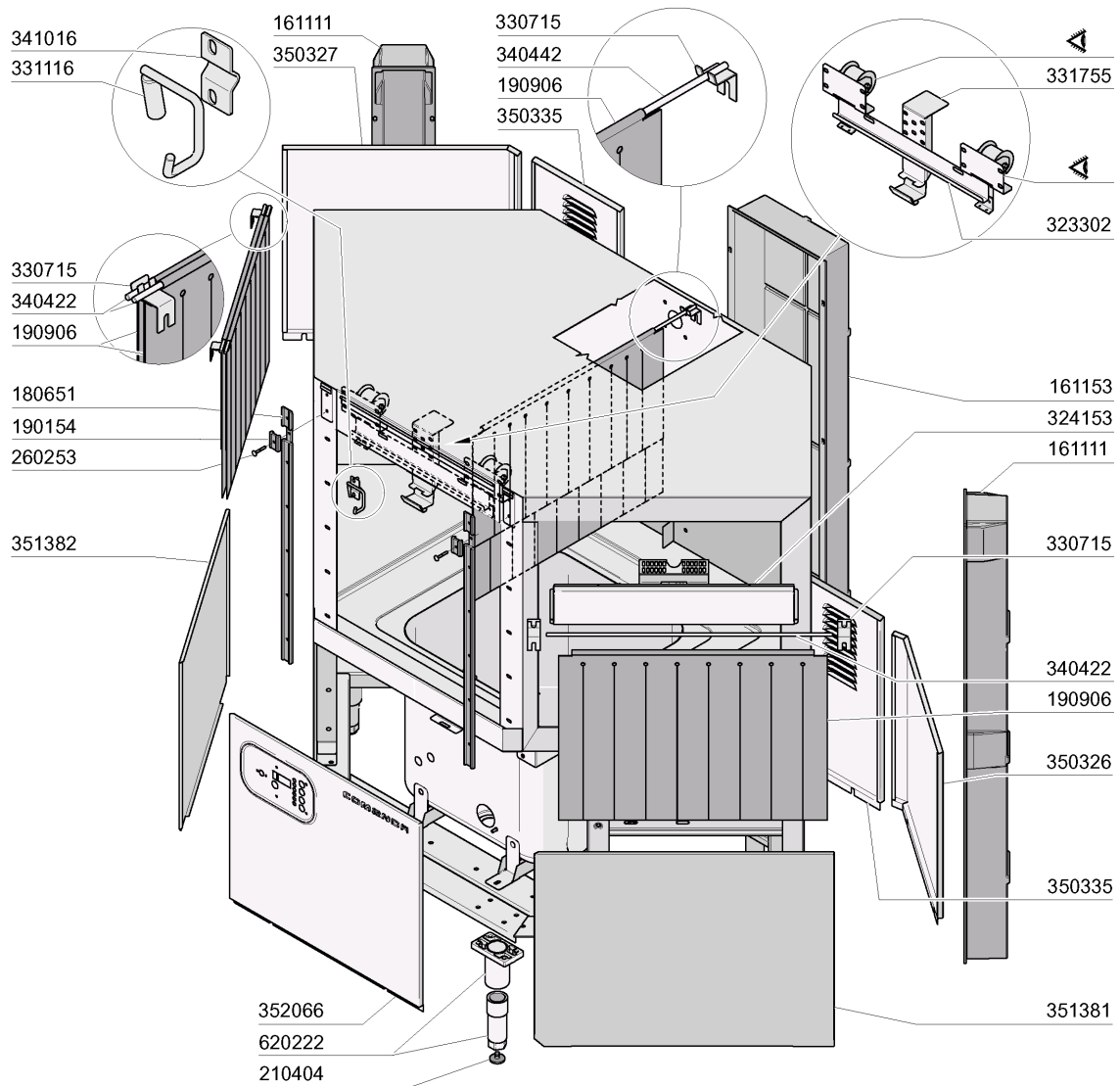
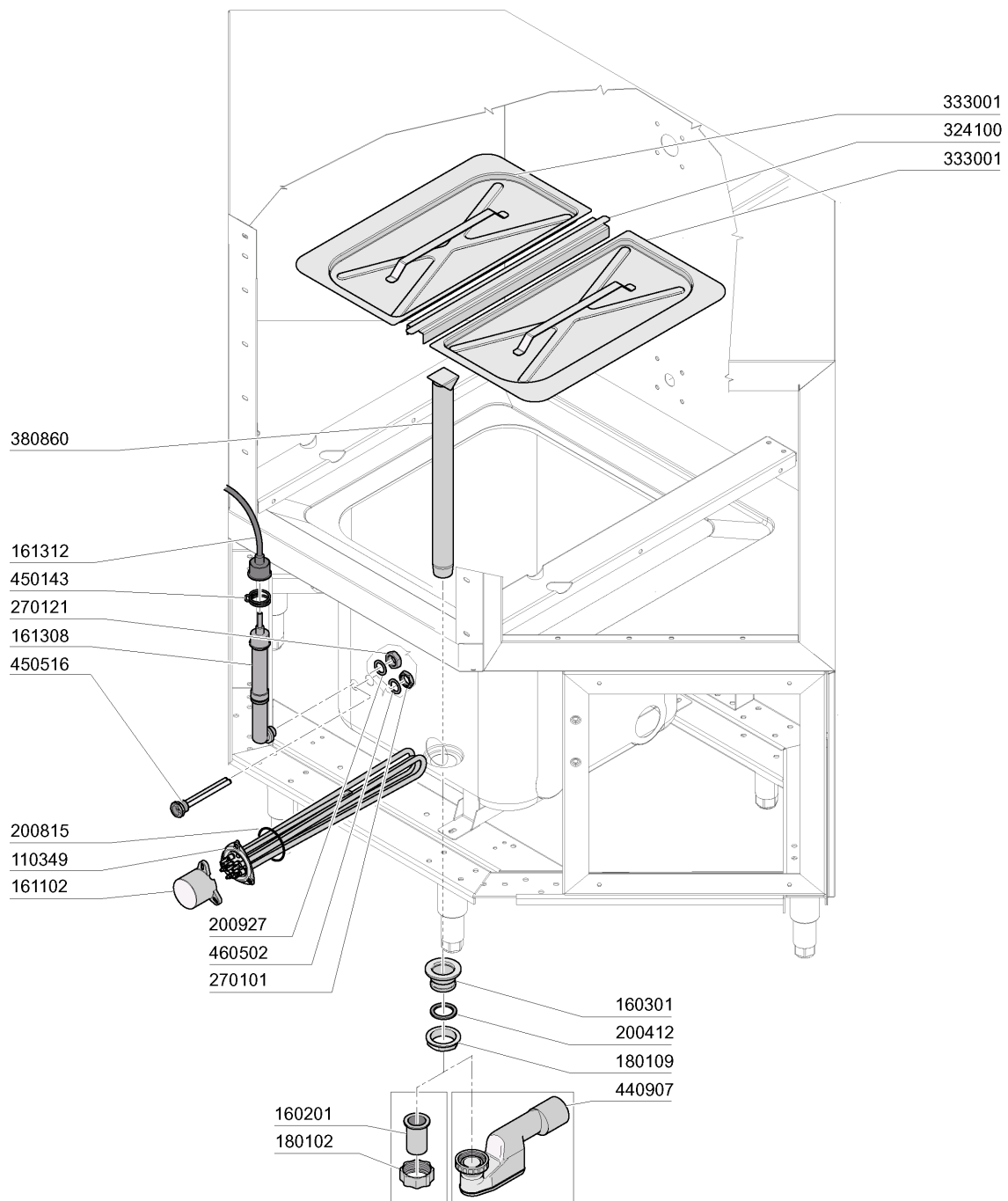


1 - Hood



12 - 2009 M. S.

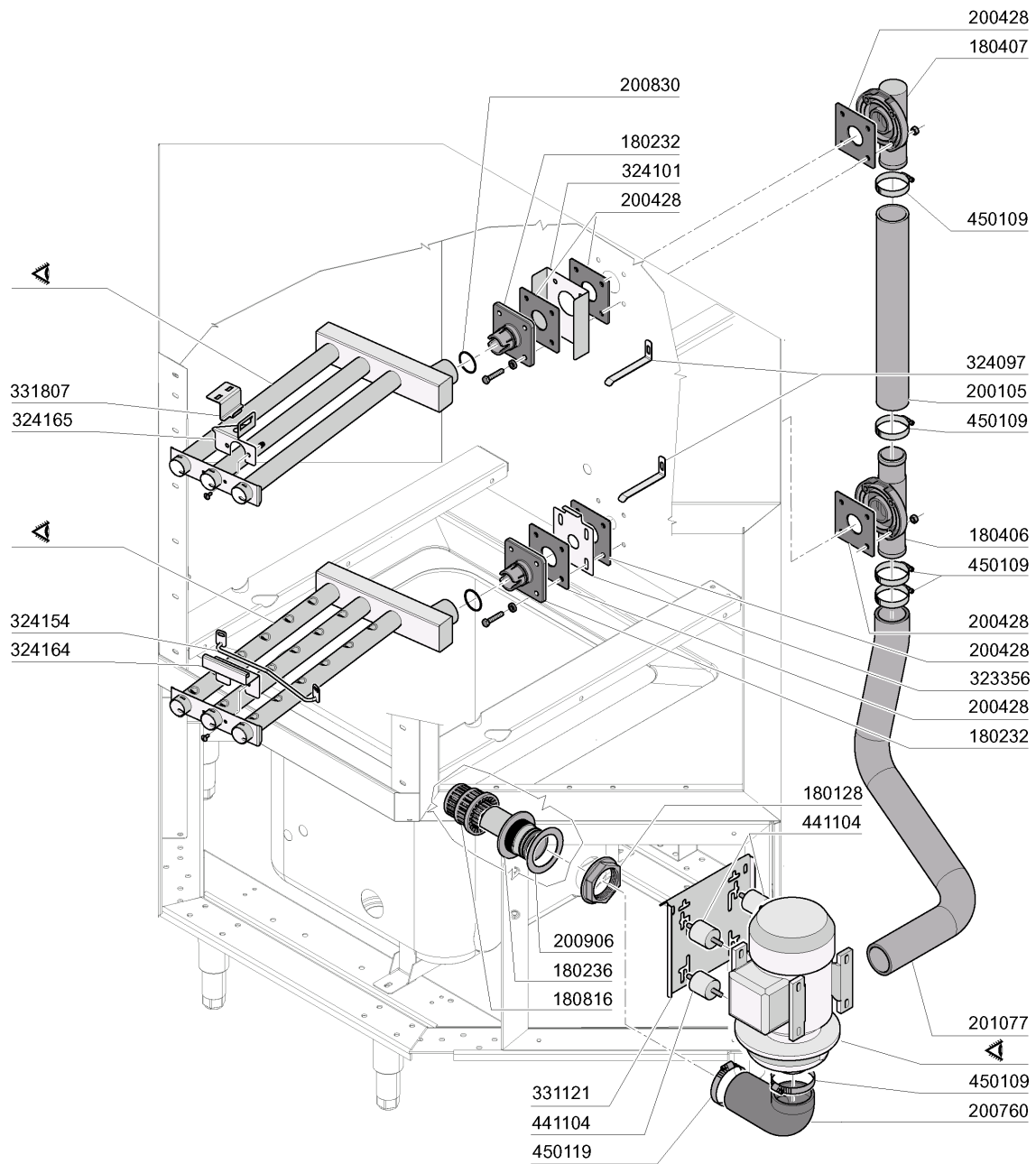
CODE	DESCRIPTION
120342	DOR MAGNETIC SWITCH
161111	BACK COVER CHANNEL 130 N S2900
161153	BACK COVER CHANNEL 300X1240 (S
161400	PLUG
180651	ACS/ACRS DOOR RAIL
190154	BRAKE
190806	MAGNET HOUSING
190906	CURTAIN IN/OUT 620X480
210404	BLACK RUBBER FOOT S90 NE SE
260253	SCREW 5X35
322971	CORNER DOOR
323302	BRACKET
324153	LEFT PANEL
330715	UPPER BRACKET CURTAIN SNL-SE
331116	DOOR SECURITY HOOK
331755	HOOK FOR DOOR SUPPORT
331760	BRACKET
332705	DOOR HANDLE
340422	SHAFT FOR CURTAIN AC-ACR
340442	SHAFT D.8 FOR CURTAIN
341016	BRACKET FOR DOOR SECURITY HOOK
350326	PANEL
350327	PANEL
350335	PANEL
351381	PANN.TESTA LAV. ANG.900 DX AC
351382	PANN.TESTA LAV. ANG.900 SX AC
352066	PANNELLO FRONT.COMANDI AC2A
411002	PERMANENT MAGNET 24X12
620222	COMPLETE ALUMINIUM LEGS



2 - Tank

CODE	DESCRIPTION
110349	HEAT.ELEMENT 6000W 230/400V
160201	ELBOW F.TANK INLET MOPLN
160301	DRAIN OUTLET 1"1/2 C-S-N
161102	ELEMENT COVER MOPL.
161308	AIR CHAMBER C95-155
161312	HOSE FOR PRESSURE SWITCH C95-1
180102	DRAIN PIPE NUT 1"1/2 F45-55
180109	LOCK NUT 1 1/2"
200412	GASKET DRAIN 11/2" 45X33X3
200815	O-RING F. HEAT.ELEM.
200927	GASKET FOR AIR TRAP
270101	HEXAGON LOCK NUT 1/2"
270121	NUT FOR AIR TRAP
324100	SUPPORT
333001	STRAINER 900 ACS
380860	ACL WASH OVERFLOW PIPE
440907	SIPHON 1"1/2
450143	CLAMP D.39,7 X 37,7
450516	THERMOSTAT SHIELD FOR 2 TERMOS
460502	GASKET 30X21X2

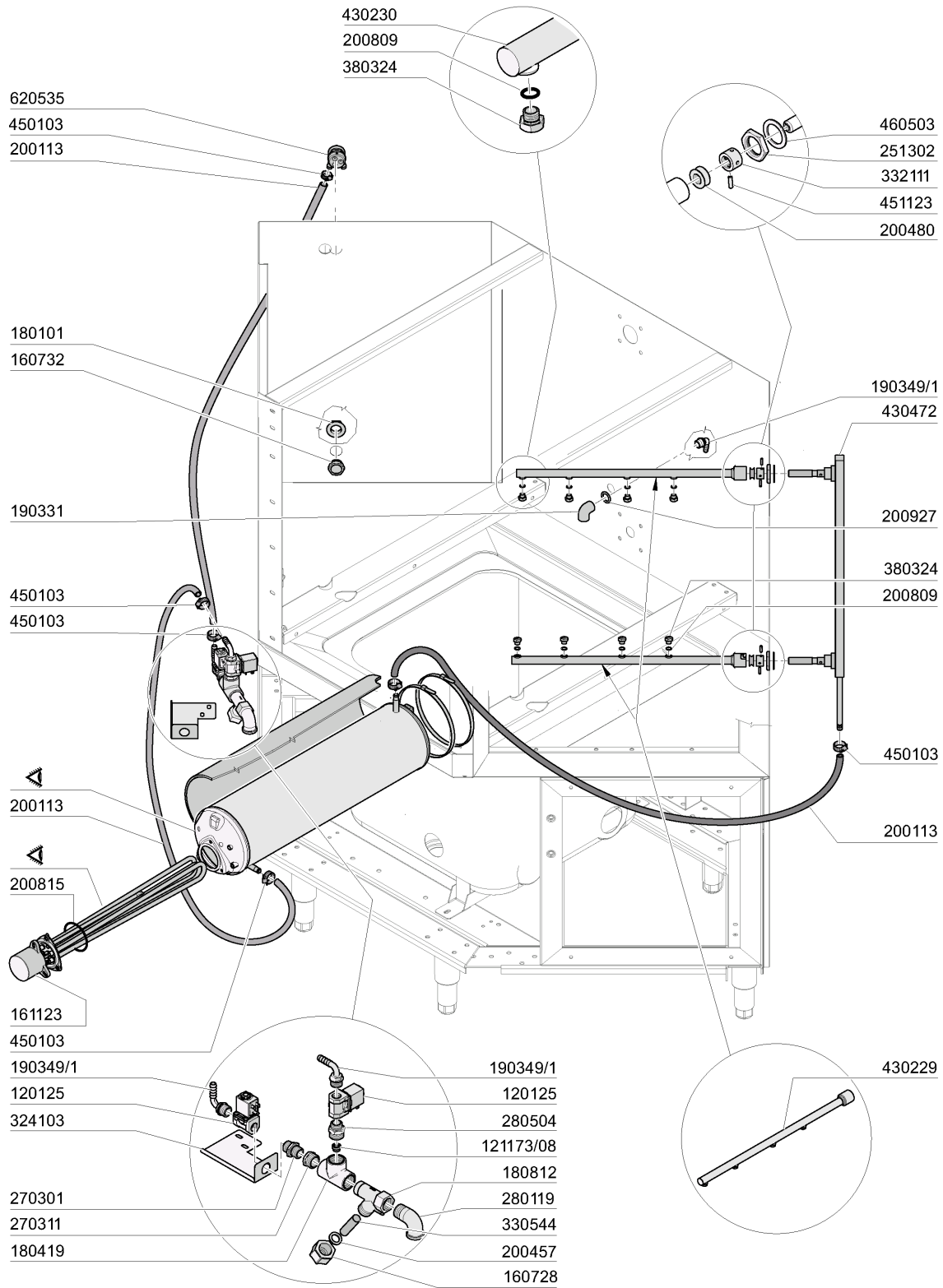
3 - Wash column



12 - 2009 M. S.

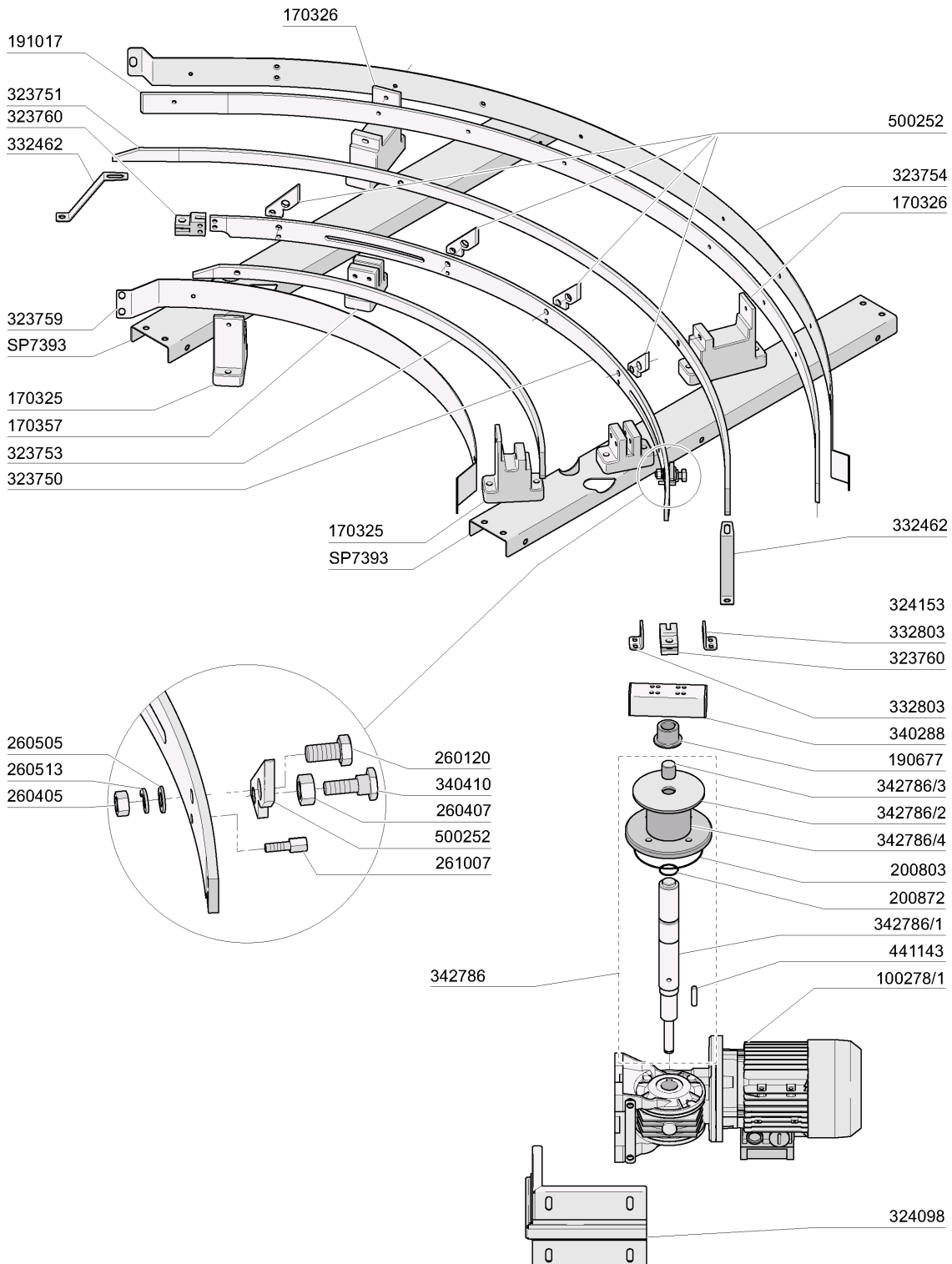
3 - Wash column

CODE	DESCRIPTION
180128	RING NUT 65,4 C140 C85
180232	WASH ARM FLANGE SNL
180236	PUMP SUCTION FOR AC-ACR-C155
180406	T-CONNECTOR F. WASHING S90-SNL
180407	ELBOW S90 S N L
180816	STRAINER OF INLET PUMP AC-ACR
200105	RUBBER HOSE 50X60
200428	GASKET 100X100X3 NEOTEN
200760	SUCTION HOSE FOR ACR
200830	O-RING 37,3X44,5X3,6
200906	GASKET D.92X66X2
201077	DELIVERY HOSE
323356	REGULAT. LOWER ARM BRACKET AC
324097	BRACKET
324101	PLATE
324154	SUPPORT
324164	PLATE
324165	PLATE
331121	FIXING PLATE FOR PUMP ACR
331807	BRACKET
441104	VIBRATION-DAMPING FEET FOR ACR
450109	CLAMP 50-65
450119	CLAMP FE ZN. 58-75 H=12,2



CODE	DESCRIPTION
120125	SOLE.N.VALVE L140Z610A 1/2F 24V
121173/08	FLUX REGULATOR 4,5L/MIN WHITE
160728	PLUG 3/4"
160732	PLUG 3/4"
161123	HEAT.ELEMENT COVER H42 SNL
180101	RETAIN.NUT 3/4" B23-10-11-12
180419	TEE 90Ø 3/4"
180812	FILTER
190331	CRANK 1/2"
190349/1	NIPPLE G 1/2 D=12MM
200113	RUBBER HOSE 12 X 22
200457	GASKET D.24X16X3 NEOPRENE
200480	GASKET F. RINSE CONNECT.
200809	OR GASKET 1,78X8,73X12,29
200815	O-RING F. HEAT.ELEM.
200927	GASKET FOR AIR TRAP
251302	S/S LOCK NUT 3/4" AC-ACR
270301	BRASS NIPPLES 1/2"
270311	NIPPLE 3/4"-1/2"
280119	ELL MF 3/4"
280504	MANIFOLD CONN.HOSE
324103	BRACKET
330544	FILTER
332111	BUSH
380324	RINSE JETS 52,5 80Ø OV1/8"
430229	RINSE ARM
430230	BRACCIO RISC.PROP.GREZZO ACRS
430472	RINSE COLUMN
450103	CLAMP FE ZN. 13-20 H=9
451123	ELASTIC PIN 4X16
460503	SEALING WASHER 38X27X2(3/4)
620535	VACUUM BREAKER

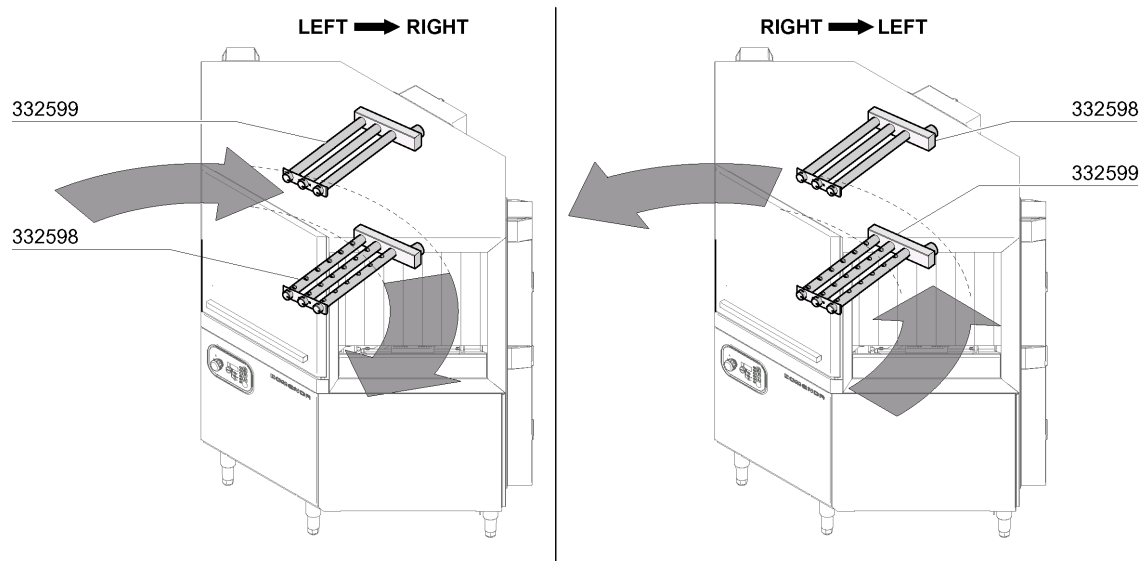
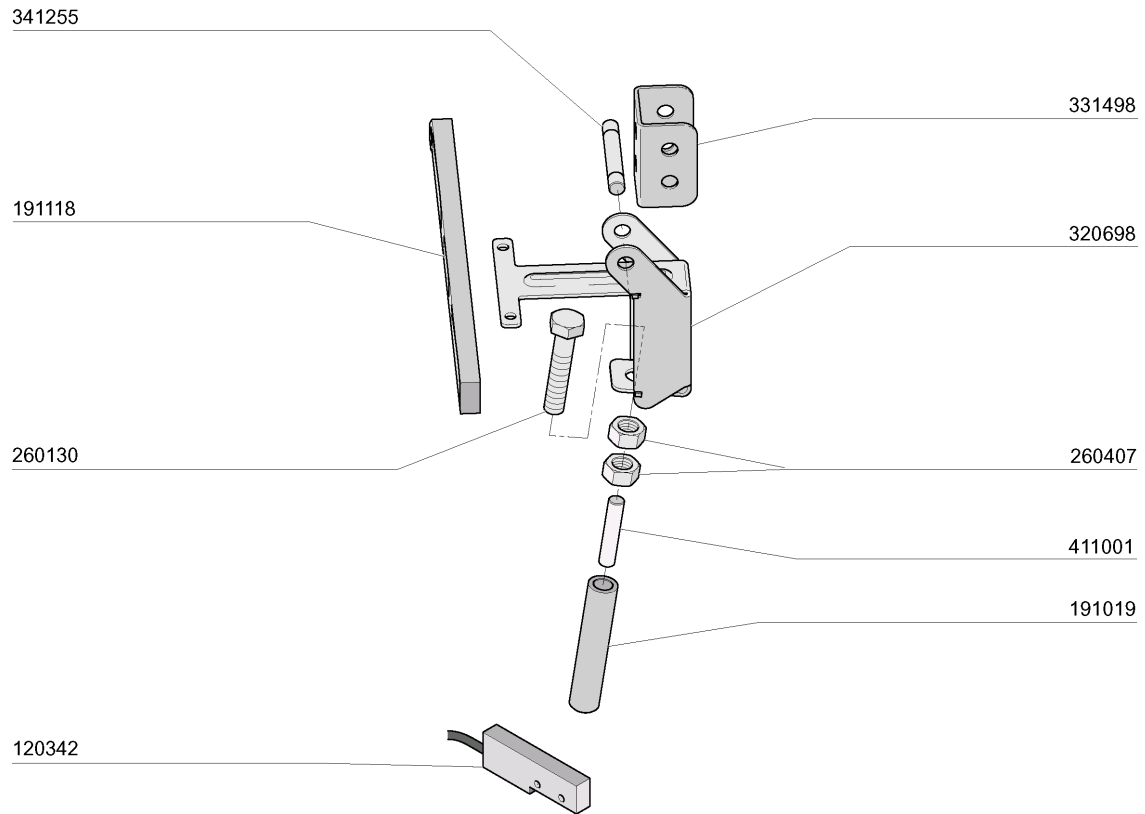
5 - Drive unit



03 - 2011 M. S.

5 - Drive unit

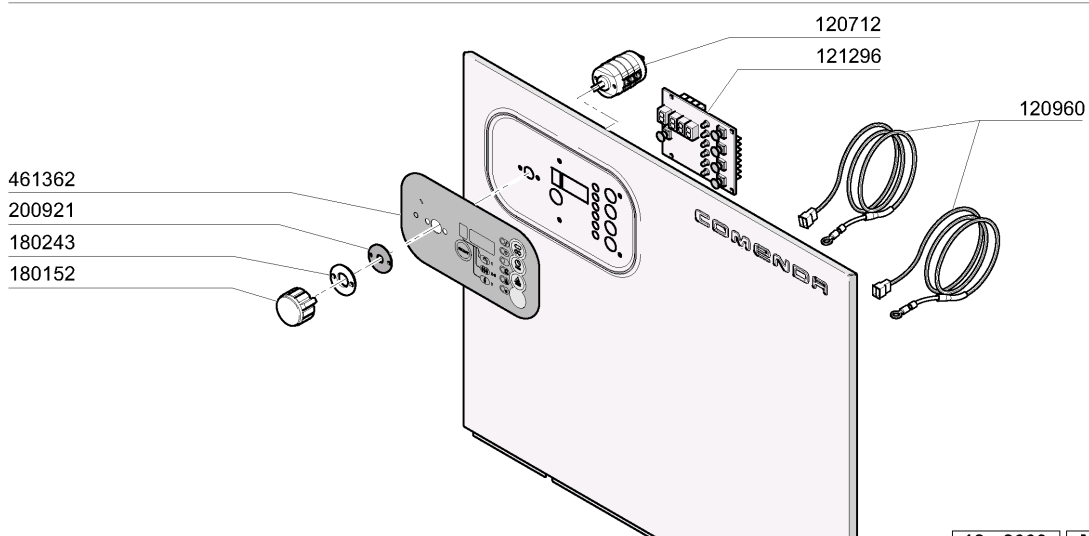
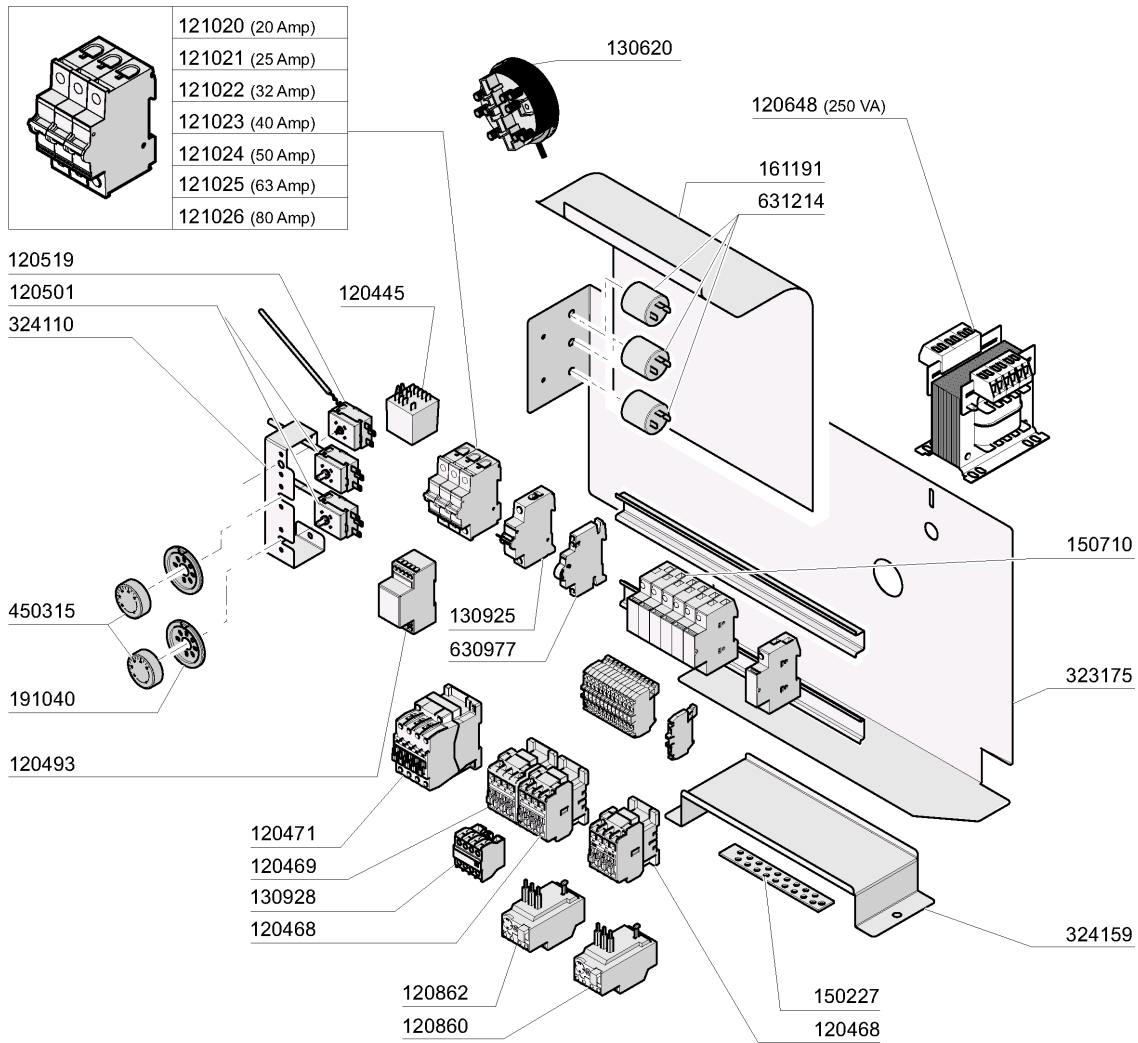
CODE	DESCRIPTION
100278/1	DRIVE MOTOR 1 SPEED
170325	INT. GUIDE SUPPORT SE CORNER
170326	EXT.GUIDE SUPPORT SE CORNER
170357	FRICTION PAD
190677	BUSH
191017	ANTIFRICT.COVER F.EXT.GUIDE CO
200803	OR GASKET 3,53X98,02X105,08
200872	O-RING 23X3,60
260120	SCREW TE 10X20
260405	NUT D.8
260407	STAINLESS STEEL NUTS D10 UNI 5
260505	STAINL.STEEL FLAT WASHER D8
260513	GROWER WASHER D8
261007	SPECIAL SCREW 5M
323750	RAIL
323751	EXTERNAL RAIL
323753	INTERNAL RAIL
323754	GUIDE
323759	GUIDE
323760	ROD SUPPORT
324098	SUPPORT
324153	LEFT PANEL
332462	BRACKET FOR RACK GUIDE
332803	BRACKET
340288	CHANNEL F.DRIVE BEARING S3Ø-SE
340410	PAWL PINS (WASH) STAINLESS STE
342786	DRIVE ASSEMBLY
342786/1	CORPO DELL'ALBERO 342786
342786/2	DISCO SUP. ALBERO 342786
342786/3	PIN
342786/4	TRONCH.TUBO PER ALBERO 342786
441143	DRIVE SHAFT 8X7X32
500252	PAWLS FOR WASHING /ACR CORNER
SP7393	SUPPORT



6 - Economiser

CODE	DESCRIPTION
120342	DOR MAGNETIC SWITCH
191019	MAGNET HOUSING S90 MOPL.-S.N.L
191118	RINSE ECONIMISER GUIDE
260130	SCREW TE 10X50 S/S
260407	STAINLESS STEEL NUTS D10 UNI 5
320698	LEVER FOR ECONOMIZER SE SNL
331498	BRACKET FOR AUTOTIMER LEVER
332598	WASH ARM AC2A
332599	WASH ARM AC2A
341255	PIN FOR ECONOMIZER SE SNL
411001	PERMANENT MAGNET 8X40

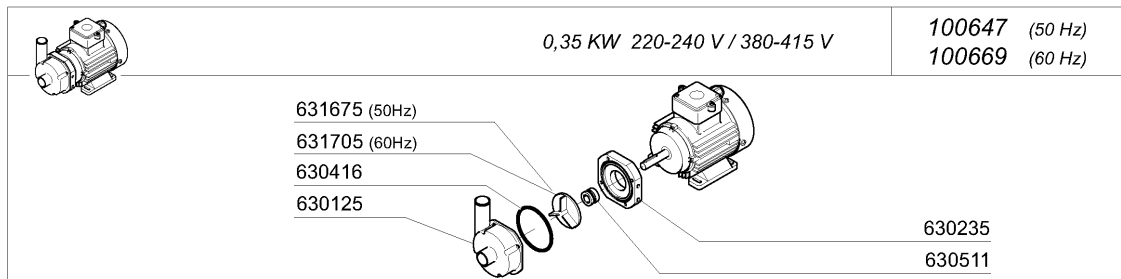
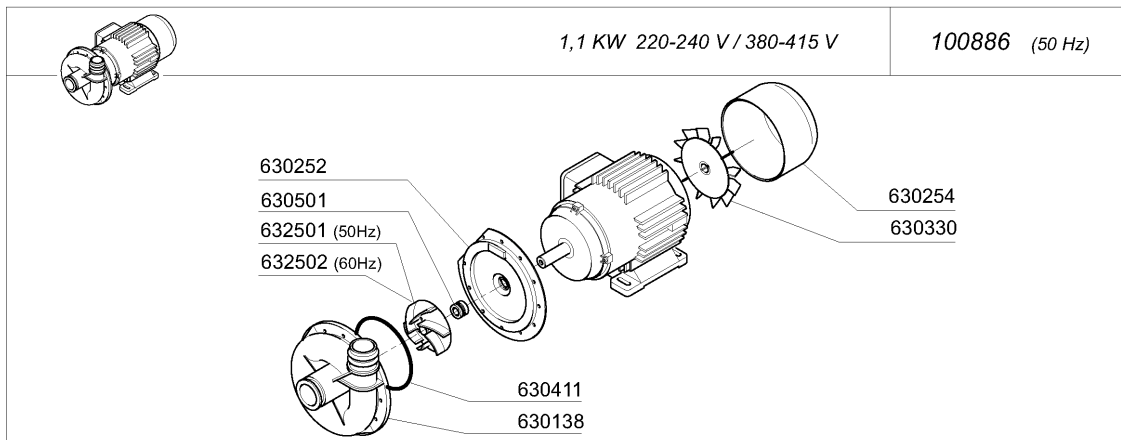
7 - Control box



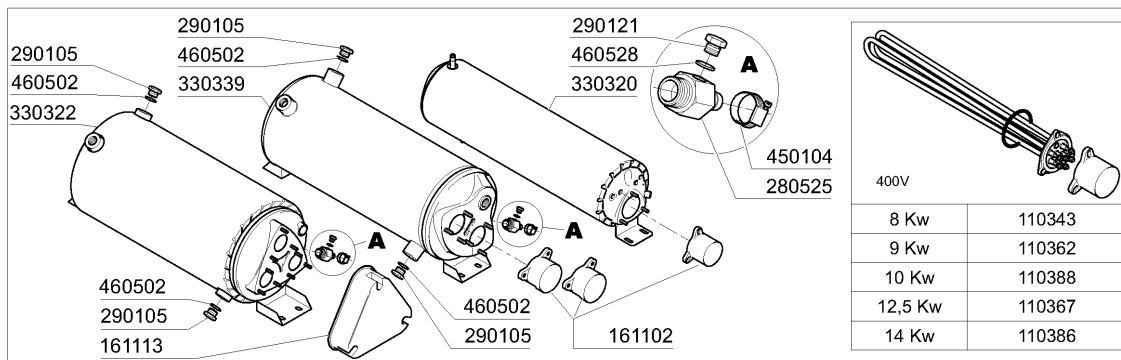
7 - Control box

CODE	DESCRIPTION
120445	AUXILIARY RELAY S.B2/3 24V
120468	CONTACTOR ABB 9A 24V 50/60HZ
120469	CONTACTOR ABB 12A 24V 50/60HZ
120471	CONTACTOR ABB 26A 24V 50/60HZ
120493	RELAY 130180240000
120501	THERMOSTAT 30/90°C
120519	SECURITY THERMOSTAT 95-125°C
120648	TRANSFORMER 250VA225-240-380-4
120712	2-POLES SWITCH 16AMP
120860	OVERLOAD RELAY ABB 1-1,4A
120862	OVERLOAD RELAY ABB 1,7-2,4A
120960	PROBE C-G
121020	CIRCUIT BREAKER 20A
121021	CIRCUIT BREAKER 25A
121022	CIRCUIT BREAKER 32A
121023	CIRCUIT BREAKER 40A
121024	CIRCUIT BREAKER 50A
121025	CIRCUIT BREAKER 63A
121026	MAGN.SWITCH 80A
121296	ELECTRONIC CONTROL PANEL
130620	PRESSURE SWITCH 3 LEVEL 50-30/
130925	CONTACT FOR CIRCUIT BREAKER
130928	CONTACT ABB 4NO
150227	BRACKET
150710	FUSE CARRIER 10,3X38 ART.21401
161191	CONTROL BOX COVER
180152	KNOB
180243	FLANGE
191040	FRAME F.THERMOSTAT KNOB
200921	GASKET
323175	SUPP.IMP.ELETT.FRONT.ACL AC2A
324110	3 THERMOSTATS SUPPORT
324159	LOWER SUPPORT
450315	KNOB F. THERMOSTAT 90°C
461362	FRONT PANEL ACS91 DIGIT
630977	COIL FOR CIRCUIT BREAKER 24V
631214	ANTI-NOISE FILTER 4011135007 3

8 - Pumps/booster



220/240 V				380/415 V					
Pompa Pompe Pump Pumpe Bomba		Teleruttore Contacteur Contactor Schaltschütz Contactor		Magnetotermici Magneto-termique Termo-magnetic Magnetischer schalter Magneto-termico		Teleruttore Contacteur Contactor Schaltschütz Contactor		Magnetotermici Magneto-termique Termo-magnetic Magnetischer schalter Magneto-termico	
Hp	Kw	A	cod.	A	cod.	A	cod.	A	cod.
0,46	0,35	9	120428	1 + 1,6	120821	9	120428	0,4 + 0,63	120830
2	1,1	9	120468	4 + 6	120824	9	120428	2,5 + 4	120823



Tipo porta Type porte Door type Tür Type Modelo puerta	AC2A 2,5 kg (2x2,5Kg)	
Cod.	391315	

M.S. 11/09

8 - Pumps/booster

CODE	DESCRIPTION
100647	PUMP HP 0,20 220/240/3 4226
100669	PUMP HP 0,12 220/380 60HZ C16
100886	PUMP 1.5HP 230-400V/3/50HZ
110343	HEAT.ELEM. 8000W 220/380V
110362	HEAT.ELEMENT 9000W 220/380V
110367	HEAT.ELEMENT 12500W 230/400V
110386	HEAT.ELEMENT14KW 230/400V
110388	HEAT.ELEMENT 10000W 230/400V
120428	CONTACTOR 9A 24V 50HZ
120468	CONTACTOR ABB 9A 24V 50/60HZ
120821	OVERLOAD RELAY 1/1,6A
120823	OVERLOAD RELAY 2.5/4 A
120824	OVERLOAD RELAY 4/6 A
120830	OVERLOAD RELAY 0,40 - 0,63 A
161102	ELEMENT COVER MOPL.
161113	ELMENT COVER BLACK
190651	BUSH
280525	NIPPLE
290105	BRASS-TE-PLUG 1/2"
290121	BRASS PLUG 1/8"
330320	INSULATED BOILER D.1 164X650 S
330322	INSULATED BOILER D.230 N/S
330339	BOILER D.220X640 F.TWO HEAT.EL
331430	BRACKET FOR DOOR SPRING
391315	DOOR SPRING 2,5KG - 40MM
450104	CLAMP FE ZN H=12,5 15-24
460502	GASKET 30X21X2
460528	GASKET 15X10X2 FOR RINSE NIPPE
630125	VOLUTE 0,12/0,3(2212-29)
630138	VOLUTE FOR PUMP LC
630235	PUMP COVER 0,12/0,3 2212-19
630252	BACK PLATE PUMP LC
630254	FAN HOUSING FOR PUMP 100801
630330	PUMP 100801 FAN IMPELLOR
630411	O-RING PUMP FI HP 2-2,7
630416	OR FOR VOLUTE 0,12/0,3
630501	SEAL FOR PUMP HP 2-3-3,2
630511	PUMP SEAL HP 0,10 82
631675	ST/ST PUMP IMPELLER 0,2HP 2226
631705	IMPELLER 60HZ FOR PUMP 100669
632501	PUMP IMPELLER 1HP 50HZ-5223
632502	PUMP IMPELLER 1HP 60HZ-5223